

THE *Farmhouse Series*



Optional Elevation A



THE SALEM



✓ 4 Beds ✓ 2.5 Baths ✓ 2,500 SF ✓ 2 Car Garage

1.5 Story First Floor Open Concept

Luxury. Comfort. The Salem.

Beautiful craftsman home with 4 bedrooms, first floor owner's suite and bath, vaulted ceiling in great room and a stunning exterior feel. See a sales agent today for more information about this home or visit Burkentine.com.

FOLLOW



/BurkentineRealEstateGroup



@BurkentineRealEstateGroup



@BurkentineREG



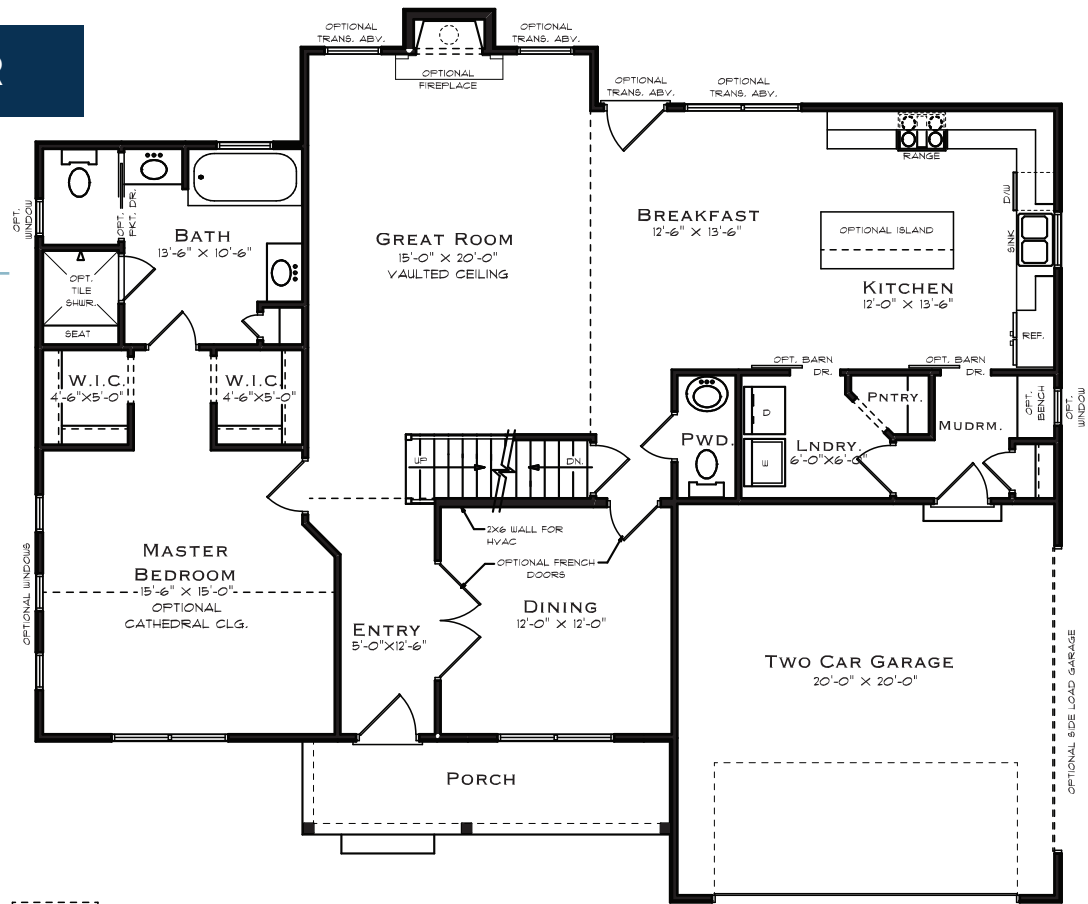
CONTACT

1640 Simpson Drive
Hanover, PA 17331

717/ 698-2614

Burkentine.com

FIRST FLOOR



SECOND FLOOR

