

## THE *Farmhouse Series*



Optional Elevation A



### THE SPRINGFIELD



✓ 4 Beds ✓ 2.5 Baths ✓ 1,900 SF ✓ 2 Car Garage

## Two Story

### First Floor Open Concept

Luxury. Comfort. Value. The Springfield.

Let us introduce you to our fresh timeless designed colonial with 4 bedrooms, generous owner's suite with bath and walk-in closet, open concept first floor and a stunning exterior feel. See a sales agent today for more information about this home or visit [Burkentine.com](http://Burkentine.com).

FOLLOW



/BurkentineRealEstateGroup



@BurkentineRealEstateGroup



@BurkentineREG



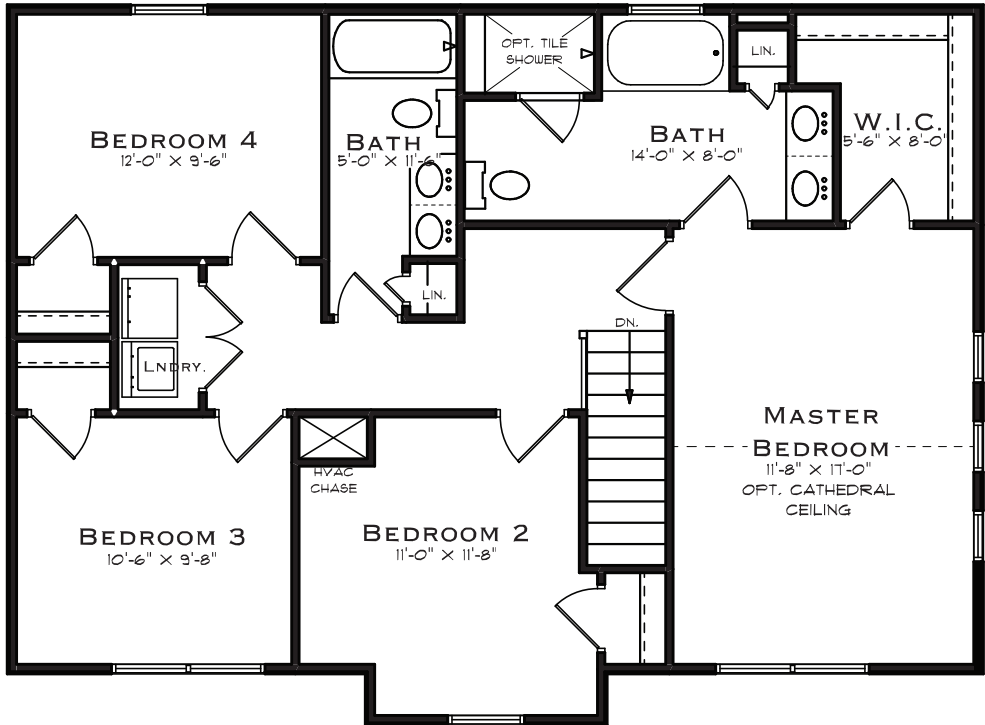
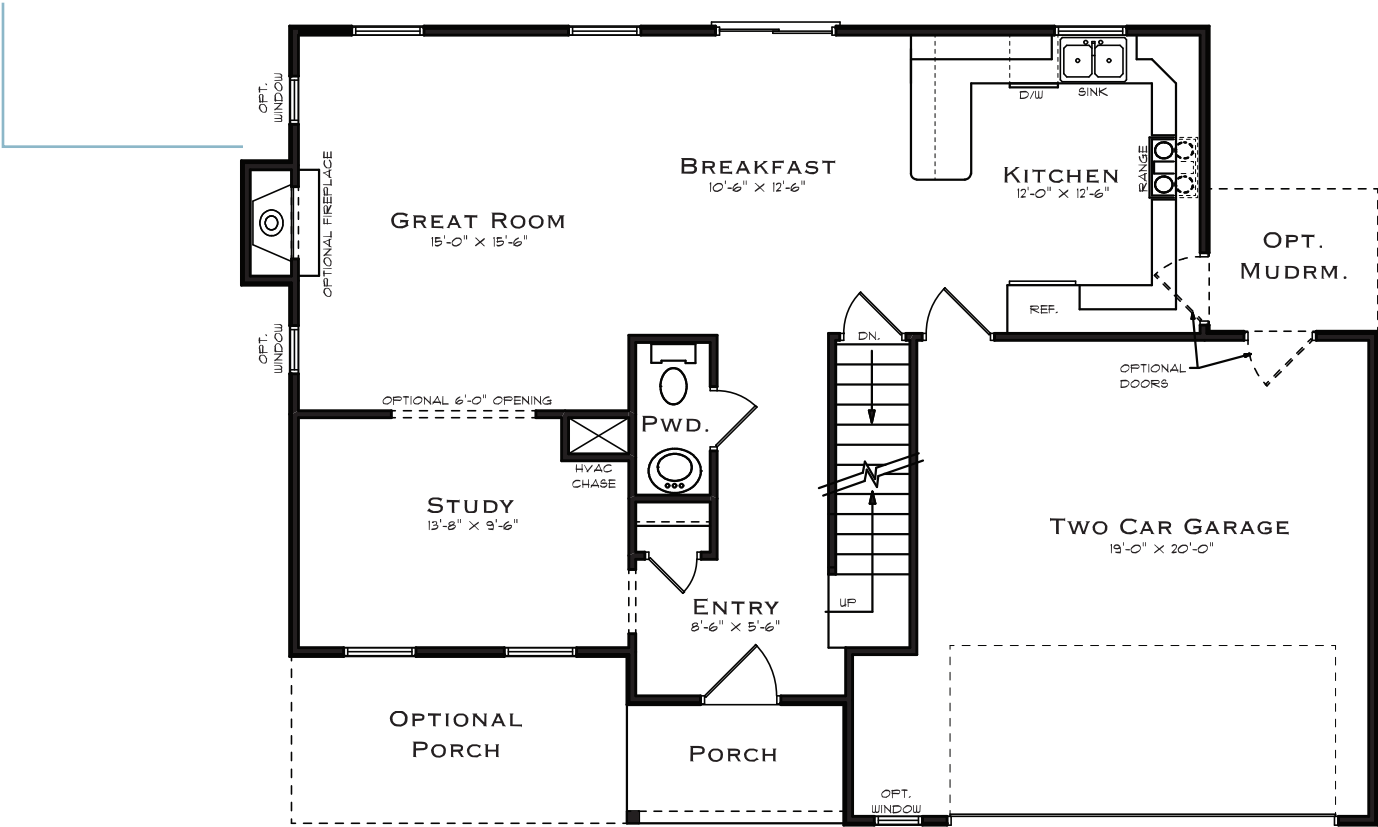
### CONTACT

1640 Simpson Drive  
Hanover, PA 17331

717/ 698-2614

[Burkentine.com](http://Burkentine.com)

FIRST FLOOR



SECOND FLOOR

