



Optional Elevation A



THE IVORY II






- ✓ 3 Beds
- ✓ 2.5 Baths
- ✓ 1,900 SF
- ✓ 1 Car Garage

Luxury Garage Townhomes

Open Concept Floor Plan

Luxury. Comfort. Value. The Ivory.
Roomy 3 bedroom townhomes featuring newly designed open concept floor plan and a stunning exterior feel. See a sales consultant today for more information about this home or visit Burkentine.com.

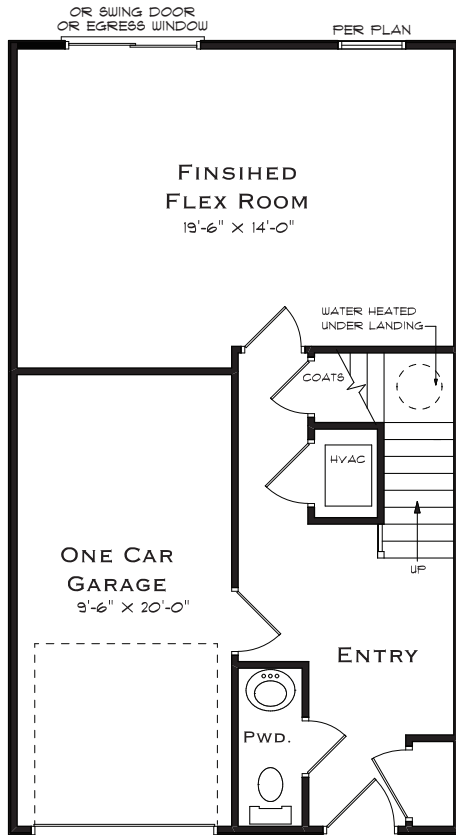
FOLLOW

-  /BurkentineRealEstateGroup
-  @BurkentineRealEstateGroup
-  @BurkentineREG

CONTACT

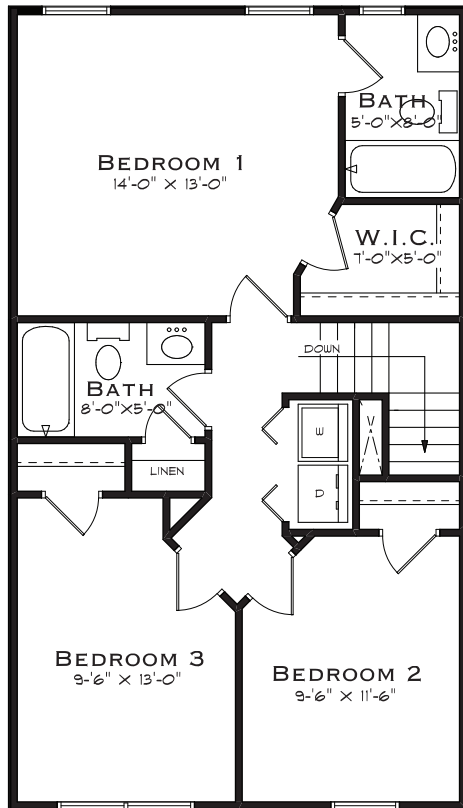
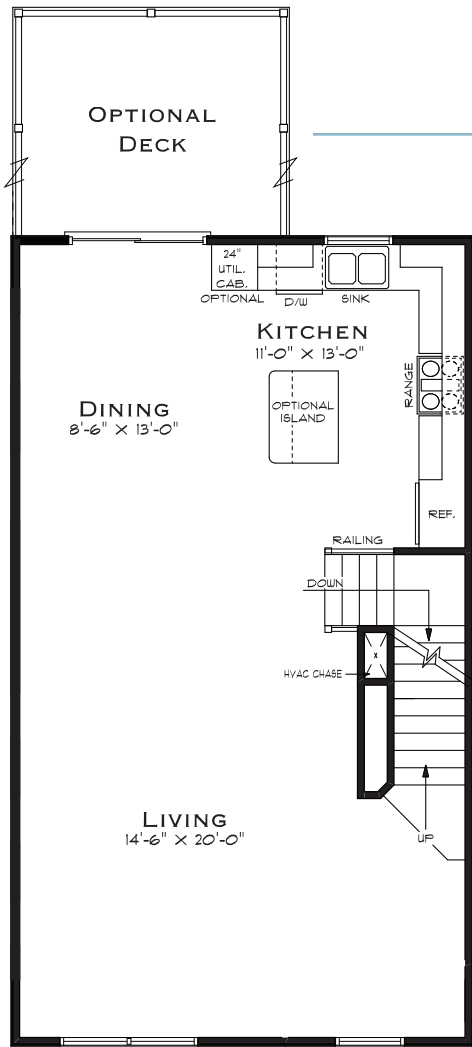
1640 Simpson Drive
Hanover, PA 17331

717/ 698-2614



FIRST FLOOR

SECOND FLOOR



THIRD FLOOR

