



THE SALEM



Optional Elevation A




- ✓ 4 Beds
- ✓ 2.5 Baths
- ✓ 2,500 SF
- ✓ 2 Car Garage

1.5 Story

First Floor Open Concept

Luxury. Comfort. The Salem.
Beautiful craftsman home with 4 bedrooms, first floor owner's suite and bath, vaulted ceiling in great room and a stunning exterior feel. See a sales agent today for more information about this home or visit Burkentine.com.

FOLLOW

-  /BurkentineRealEstateGroup
-  @BurkentineRealEstateGroup
-  @BurkentineREG

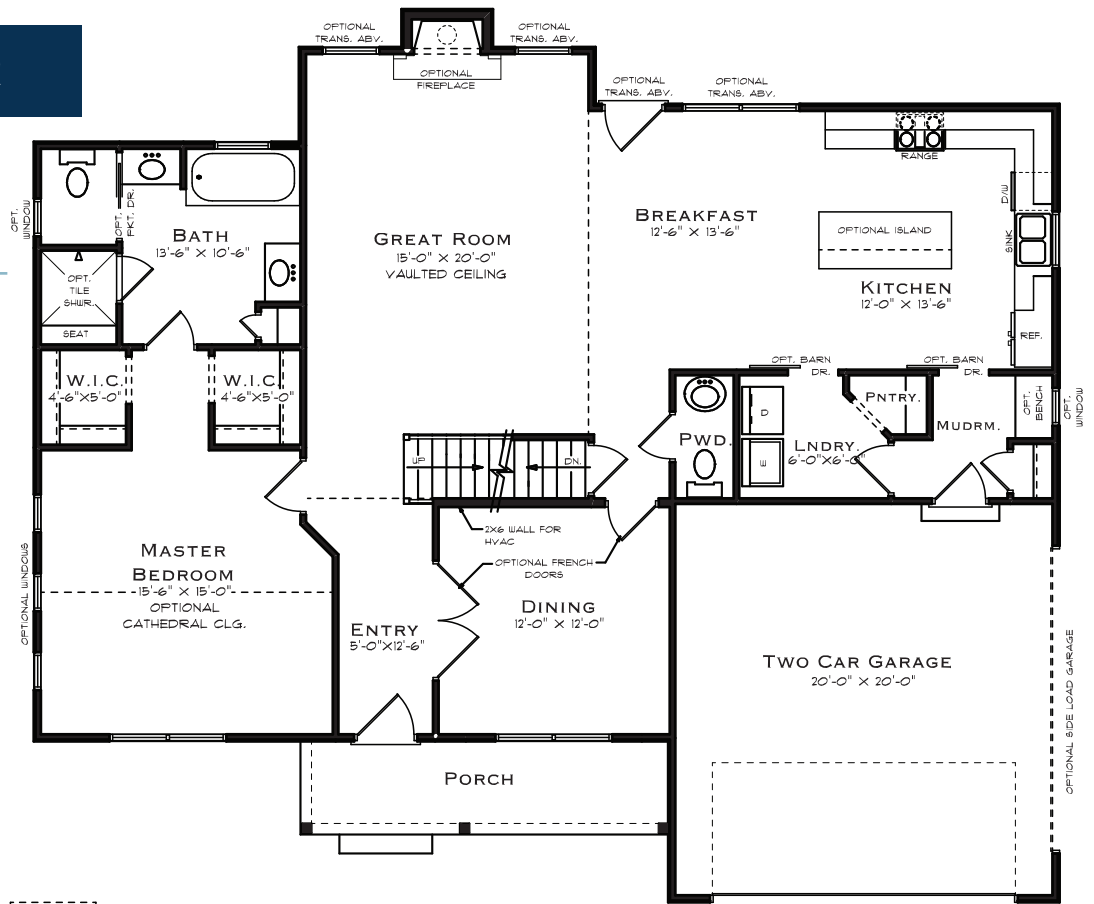


CONTACT

1640 Simpson Drive
Hanover, PA 17331

717/ 698-2614

FIRST FLOOR



SECOND FLOOR

